

# THE BEREANS

ACTS 17:11

1 John 2:7-11  
Lesson #6  
One Commandment -  
Two Commands  
02/06/2022

## With respect to our identification as Christians, what is most important?

- Faith confession - trusting Jesus as Christ.
- Proper initiation - water baptism.
- Orthodox doctrine - believing the right things.
- Social connection - with the Body of Christ.
- Holy living - living a moral life.

## What does John mention?

“walk in the same manner that Jesus did”  
starting with how we relate to each other.

### 1 John 2

“7 Beloved, I am not writing a new commandment to you, but an old commandment which you have had from the beginning; the old commandment is **the word which you have heard**. 8 On the other hand, I am writing a new commandment to you, which is true in Him and in you, because the darkness is passing away, and the true light is already shining.”

A sign of an authentic Christian is **conforming to life under the New Covenant.**

## The commandment to love

### Jeremiah 31:31-34

“Behold, days are coming’ declares the Lord, ‘when I will make a **new covenant** with the house of Israel’. . . I will put My law within them and on their heart I will write it;”

### Luke 22:20

“And in the same way He took the cup after they had eaten, saying, ‘This cup which I poured out for you is the **new covenant** in my blood.’”



### 1 John 2:8

“On the other hand, I am writing a new commandment to you, which is true **in Him** and **in you**, because the darkness is passing away, and the **true light is already shining**.”

This commandment is new in two ways

1. Jesus’ life’s **outward modeling**
2. Jesus’ Spirit’s **inner molding**

### 1 John 2

“9 The one who says he is in the light and yet hates his brother is in the darkness until now. 10 The one who loves his brother abides in the light and **there is no cause for stumbling in him**. 11 But the one who hates his brother is in the darkness and walks in the darkness, and **does not know where he is going because the darkness has blinded his eyes**.”

**Walking as Jesus’ walked calls for:**

1. **knowing that we share His Spirit.**
2. **learning from his example.**
3. **keeping the main thing the main thing.**

## Greek words for “love”

**Eros**  
sensual  
passion

**Storge**  
familial  
connection

Only two are used in the N.T.

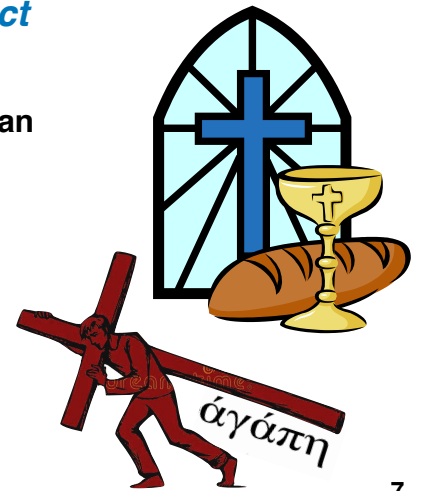
**Agape**  
sacrificial  
caring

**Philia**  
warm  
affection

6

## *Agape is distinct in that it is:*

- unique to Christian literature.
- chosen action - not an emotion
- unconditional - not natural.
- self sacrificing service.



7

**AGAPE LOVE** is a free choice to move toward someone’s soul with a self sacrificing commitment to help them reach the desire of their heart, which is peace with God, self, and others.



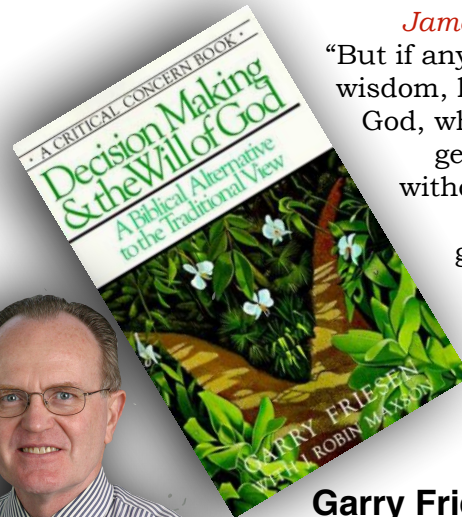
## *Two challenges*

1. Know that this is the core of **God’s nature, Jesus’ way, and our calling?**
2. Know the implications of this for our **life - family, brethren, neighbors, & world?**

8

## *James 1:5*

“But if any of you lacks wisdom, let him ask of God, who gives to all generously and without reproach, and it will be given to him.”



Garry Friesen

9

## *Popular but problematic approaches*

- ✓ **Perfect plan model** - Expect God to micromanage every detail.
- ✓ **Pass the buck** - Get someone else to tell us what we should do.
- ✓ **Pray for a revelation** - Look for a sign that will tell us what to do.
- ✓ **Proof text** - find a verse in the Bible.

**These approaches do not help us grow in wisdom.**

10

1. Expect a compass rather than a road map.



11

## 2. Face in the right direction.

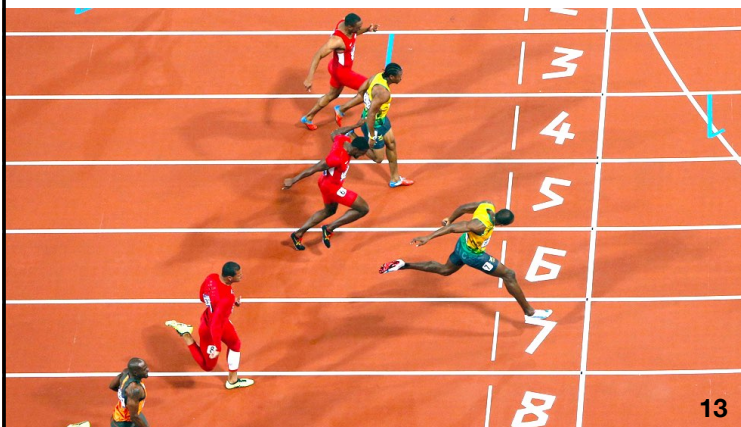


- Walking starts with **seeing** the glory of the Cross.
- Walking means taking our **baptism** seriously.
- Walking is **knowing** our core values and calling.

12

## 3. Stay in your lane.

- We must not take responsibility for things we can't control or are none of our business.



13

It is amazing how knowing & minding our own business **reduces stress** for everyone.

If we are not a part of the problem or the solution, **we should back off.**

Listen up and shut up **so you can cool down.**

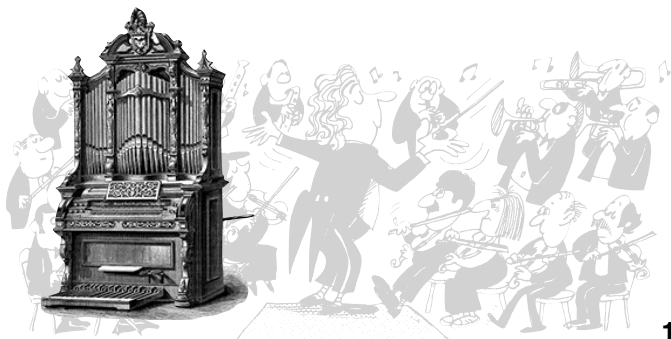
14

- We are not the composer, or conductor, but we do have a part and an instrument.



15

- That instrument is not the organ, where we are the only one needed.



16

## 4. Know whose Spirit we are sharing.

*1 John 2:27*




“the anointing which you received from Him remains in you, and you have no need for anyone to teach you; but as His anointing teaches you about all things, and is true and is not a lie, **and just as it has taught you, you remain in Him.**”



17






Understanding the role of **the Law**, **the Cross**, and **the Spirit** is critical.  
 Walking in the Light is not focused on **our keeping the Law** by the power of the Spirit.

<p>Tutor (Mirror)</p>  <p>The Law</p>	<p>Surrogate (Substitute)</p>  <p>The Cross</p>	<p>Paraclete (Comforter)</p>  <p>The Spirit</p>
--	--	--

18

“Walking as Jesus’ walked” is “walking in the light” centered on the **“Way of the Cross”**.

<p>Tutor (Mirror)</p>  <p>The Law</p>	<p>Surrogate (Substitute)</p>  <p>The Cross</p>	<p>Paraclete (Comforter)</p>  <p>The Spirit</p>
---	--	--

19

The ministry of both the Law and the Spirit is not to **Draw** our attention so much as it is to **Direct** our attention.

Galatians 3:24      John 15:26

20

We have an intimate connection with Christ through his indwelling Spirit.

<b>Body</b> (1 Cor. 12:27)	<b>Bride</b> (Eph. 5:22-32)	<b>Building</b> (1 Peter 2:4-7)	<b>Branches</b> (John 15:1-16)

21

**Love is not a gift, it is a sign.**

The Image of God is not a sign, but a gift.



22

1 John

Next week Gal. 6:9-10

What does love look like?



23